

Installation Guide

Twin Wall DP25
Insulated Flue System

For: Multifuel, Woodburning, Biomass,
Pellet and Gas & Oil Applications

100mm to 250mm Available from stock
Powder Coated Stock Available in 100mm,
130mm & 150mm



Contents

- 3-4 Introducing Roccheggiani & Percy Doughty
- 5 Commercial Design
- 6 Technical Specifications: Domestic Designation
- 7 Technical Specifications: Commercial Designation
- 8 Typical Internal Twin Wall System (Stainless Steel)
- 10 Typical Internal Twin Wall System (Black)
- 12 Typical Installation (Passing Through Floor)
- 14 External Supported Chimney System
- 16 Current Regulations & British Standards
- 18 Flue Pipe Lengths
- 20 Flue Pipe Bends
- 24 Flue Pipe Tees
- 27 Terminals
- 28 Flue Adaptors
- 30 Roofing & Flashing
- 32 Bracket & Supports
- 36 Fire Safety
- 37 Decorative
- 40 Insulation Wrap
- 41 Roof Brace Kit
- 41 Standard Chimney Support



Introducing Roccheggiani DP25 Twinwall

Manufactured by Roccheggiani in Italy, the DP25 double wall series is the leading product in Roccheggiani's range of flue systems. It can be used for a wide variety of purposes whether installing a traditional stove or a modern high efficiency condensing* appliance the DP25 product offers the ideal solution. DP25 is a double wall system that can be installed both inside and outside thanks to an efficient thermal insulation system made of high-density rock wool, which guarantees the optimal performance in all weather conditions.

The flue sections and associated components are easy to install, have a comprehensive weatherproof seal when locked into place, when installed with the provided locking band. This combined system allows for the best thermal performance, an efficient installation and all together with an uncompromised finish. The range has been tested in accordance with EN 1856-1 and the thermal class is tested to T600, allowing for the highest combustion temperature performance. The system is available for all domestic standard installations, in both stainless steel and powder coated black. The system is also available for larger commercial applications and in several colour choices.



Percy Doughty established in 1952 are the UK's largest wholesale supplier of quality fires and fireplaces. For more than 70 years we've put our customers first understanding their ever-changing needs. It's a business built on forging strong relationships that last.

Percy Doughty is unrecognisable from its early days, built on a foundation of seventy years the company is a combination of logistics, commercial, creative, technical, research & development and customer service teams with 8 directors and 70 staff across two sites

Over the last decade we've undergone a huge transformation. Strategic growth has been driven by new product ranges and the introduction of premium brands with industry leading expertise, unparalleled customer service alongside excellent technical support. This growth has allowed us to steadily extend our capabilities and has meant we are in a perfect position to further our expansion with products and partners across Europe and North America.

We're deeply proud of our roots, we're still humble and even prouder of where we are today. Innovation defines us, every employee is empowered to excel, from our warehouse team to customer service staff right through to our leadership team. This is just the start of our journey, with a vision to continue our proud record of internal staff progression, ambitious recruitment, innovative and market leading quality products, supported by incredible service.

Commercial Design

Percy Doughty working in partnership with Roccheggiani offer a comprehensive design, supply and installation service to the commercial sector as well as supplying flues, chimney fans, stoves and associated products for the domestic market. We pride ourselves on offering an exceptional level of service, high quality products and working closely with our customers to ensure all of their requirements are met.

Commercial

Flue and chimney supply & design

We have been supplying and installing flues and chimneys to the commercial and industrial sectors since 1952. Experienced in site assessments and system designs we offer specialist advice on the most cost-effective options for your project.

Flues & Chimneys

Design, supply, installation specialists

We provide a comprehensive chimney and exhaust design, supply and installation service throughout the UK to suit your requirements. We pride ourselves on offering a high level of service, working closely in a partnership relationship with our customers throughout the lifecycle of their project. (Subject to project value).

- Heating And Hot Water Appliances
- Generator Exhausts
- Chp / Cogeneration
- Freestanding & Mast Supported Chimneys
- Chimney Relining
- Lightweight Exhaust Silencers
- Commercial Chimney Fans
- Flue Dilution Systems
- Biomass



Site Surveys

Our experienced consultants conduct fully detailed site surveys before offering technical advice regarding a range of solutions and, if required, CCTV surveys can also be carried out.



System Design

The design team and project managers are able to provide a full design service ensuring that the solution proposed meets all of the project requirements as well as the appropriate standards and legislation.



Project Management

Each project is managed by an experienced dedicated Project Manager who will act as the point of contact for all elements of the project and is fully committed to ensuring that it is delivered efficiently and on time and legislation.

Technical Specifications

When using the powder coated flue system, it is important to complete all due diligences in relation to the clearances of combustible surfaces. The black powder coating increases the heat radiation from the surface of the pipe in comparison to stainless steel. Therefore, the distance to combustible materials will increase and all necessary steps must be taken to protect the combustible surface in accordance with the set designation. Typically powder coated flue systems are designed to be installed in areas which are in free air and not enclosed. Where circumstances dictate other, a typical installation, additional safety measures must be taken to satisfy your risk assessment and to ensure absolute compliance with the current British Standards and National Building Regulations.

Domestic Designation

DP25 Chimney system (Stainless Steel) working with N1 negative pressure (without gasket)
EN 1856-1 Product designation: T600 N1 W V2 L50040 G50
CE certificate number 0036 CPR 9811 018
UKCA certificate number 0168 CPR 9811 518 Rev.00

WHERE	
T600	Temperature Class
N1	Negative Pressure Level
W	Condensate Resistance; the chimney system is fit for wet working conditions
V2	Corrosion Resistance Class
L50040	Inner Wall Material Specification L50: material 1.4404 (AISI 316L) 040: material thickness 0.4mm
G	The chimney system is soot-fire resistant
50:	Minimum distance (mm) from combustible materials at which the chimney system can be installed; this value depends on the type of the outer wall Up to inner diameter 300mm and AISI 304 outer wall distance to combustible materials 50mm

DP25 Chimney system (Powder Coated Black) working with N1 negative pressure (without gasket)
EN 1856-1 Product designation: T600 N1 W V2 L50040 G130
CE certificate number 0036 CPR 9811 023

WHERE	
T600	Temperature Class
N1	Negative Pressure Level
W	Condensate Resistance; the chimney system is fit for wet working conditions
V2	Corrosion Resistance Class
L50040	Inner Wall Material Specification L50: material 1.4404 (AISI 316L) 040: material thickness 0.4mm
G	The chimney system is soot-fire resistant
130:	Minimum distance (mm) from combustible materials at which the chimney system can be installed; this value depends of the type on the outer wall Up to inner diameter 300mm, distance to combustible materials 130mm (addition measures see page 12, distance reduced to 73mm)

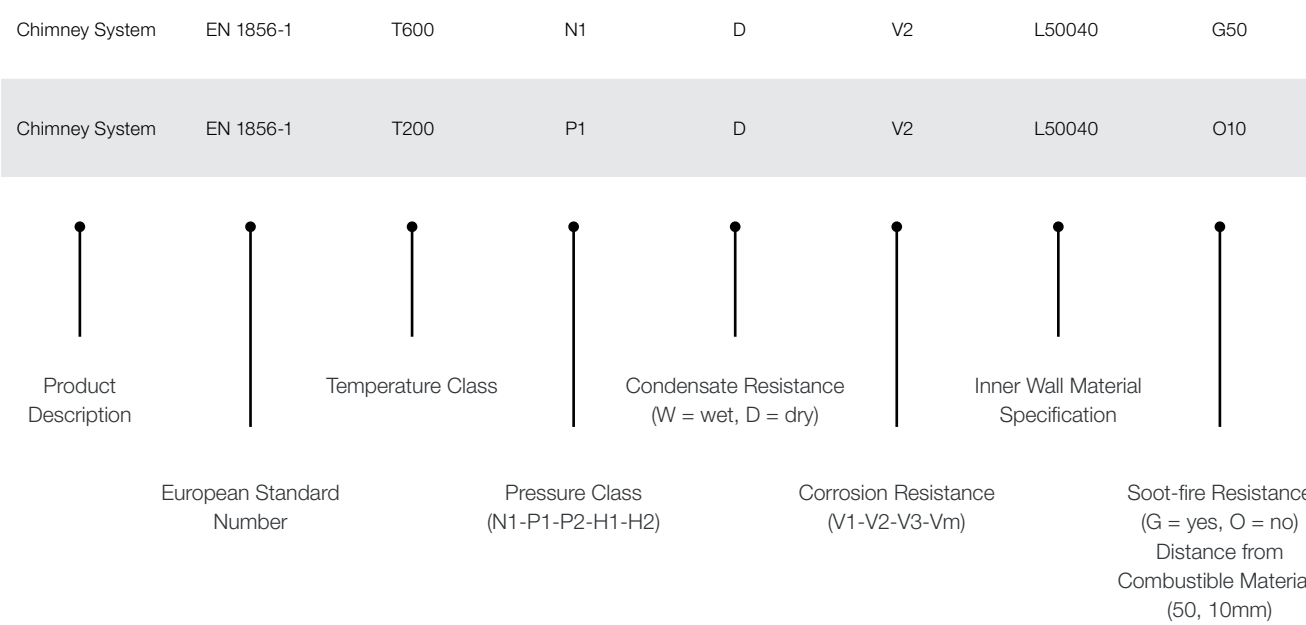
Commercial Designation

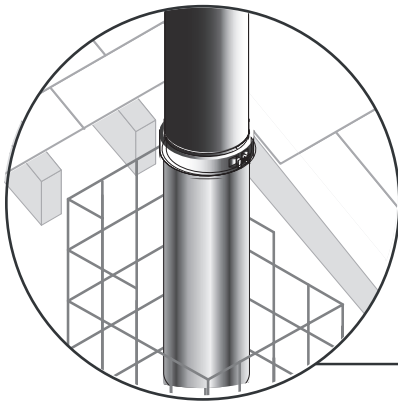
DP25 Chimney system (Stainless Steel) working with P1 positive pressure (with gasket)
EN 1856-1 Product designation: T200 P1 D V2 L50040 O10
CE certificate number 0036 CPR 9811 019
UKCA certificate number 0168 CPR 9811 519 Rev.00

WHERE	
T200	Temperature Class
P1	Positive Pressure Level
D	Condensate Resistance; the chimney system is fit for wet working conditions
V2	Corrosion Resistance Class
L50040	Inner Wall Material Specification L50: material 1.4404 (AISI 316L) 040: material thickness 0.4mm
O	The chimney system is not soot-fire resistant
10:	Minimum distance (mm) from combustible materials at which the chimney system can be installed; this value depends on the type of the outer wall Up to inner diameter 300mm and AISI 304 outer wall, distance to combustible materials 10mm

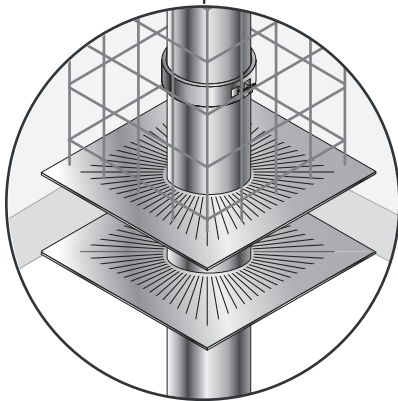
Typical Breakdown of Designation

Table 1:

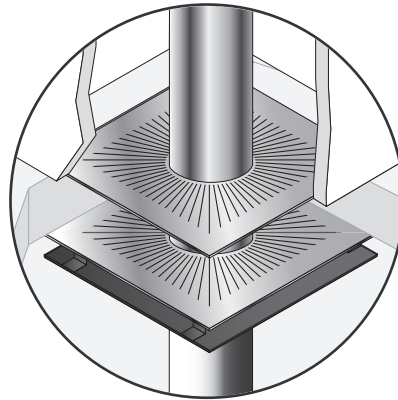




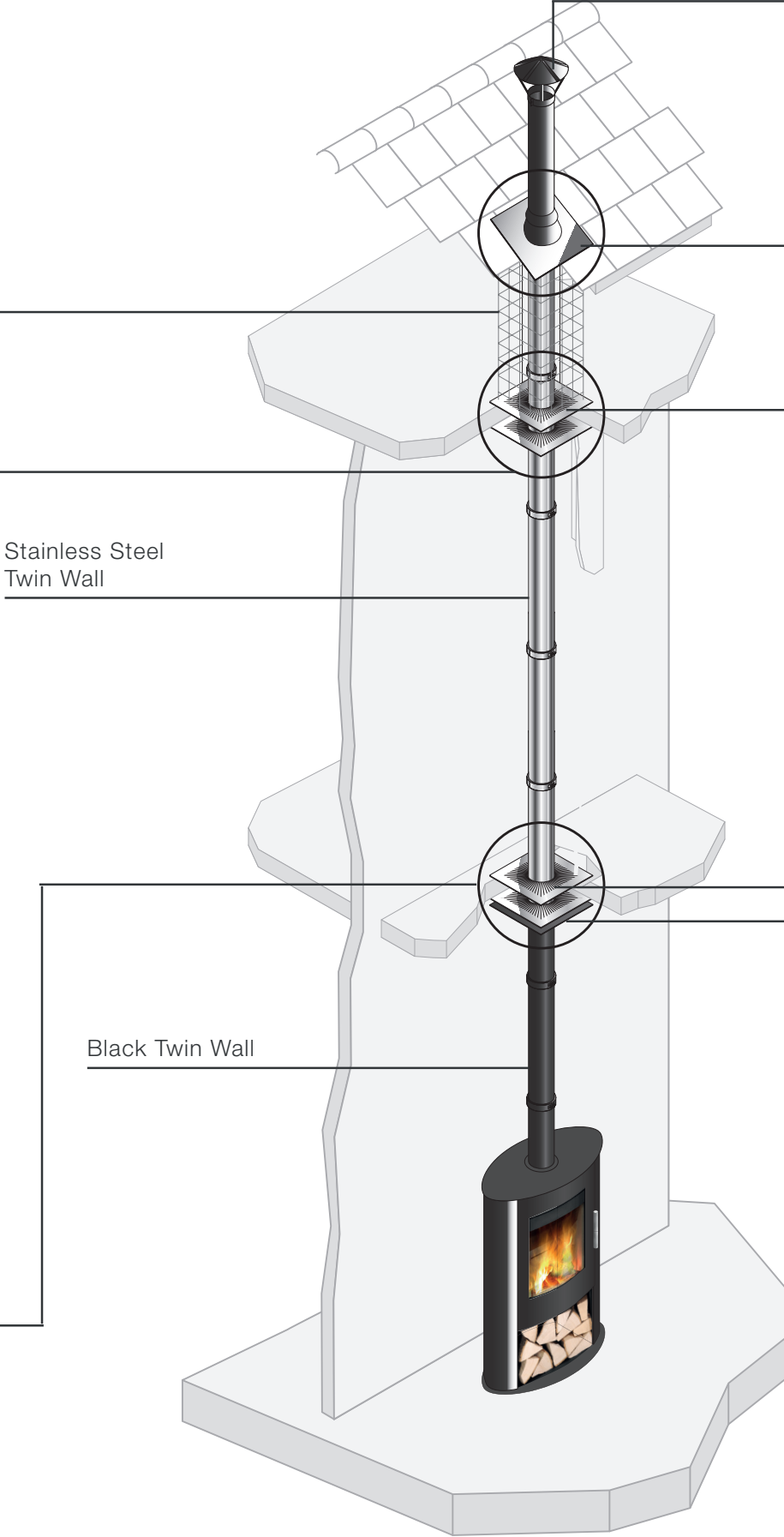
Protective Mesh Enclosure



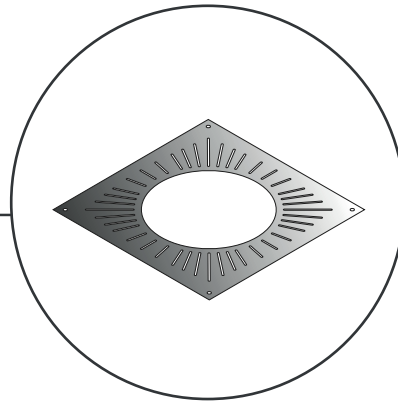
Ventilated Fire Stop Detail
(Loft Space)



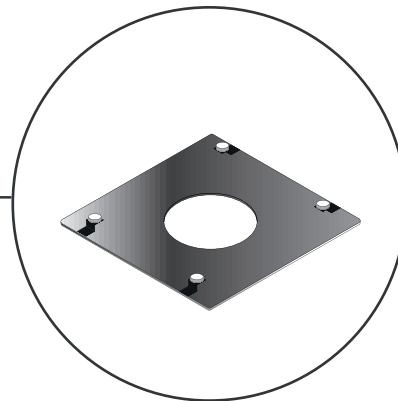
Ventilated Fire Stop Detail
(First Floor)



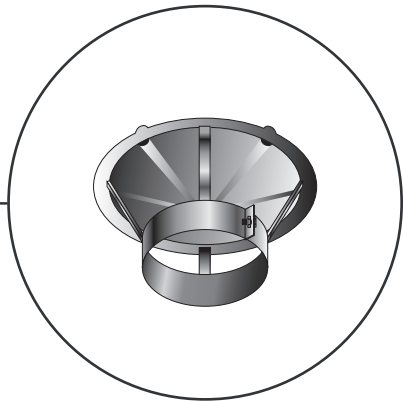
Storm Collar
Available in Black and Steel
See page 30 for information



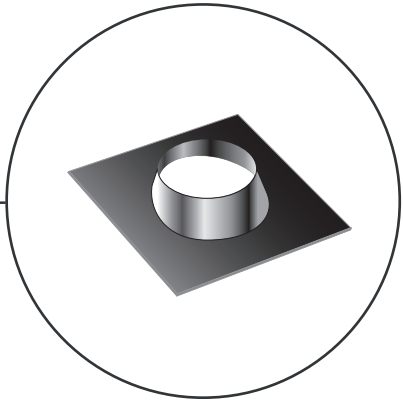
Ventilated Fire Stop
Available in Black and Steel
See page 36 for information



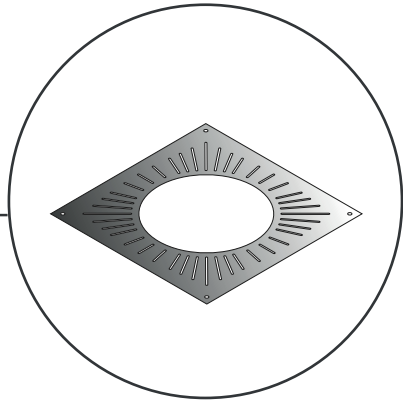
Magnetic Cover Plate
Available in Black
See page 37 for information



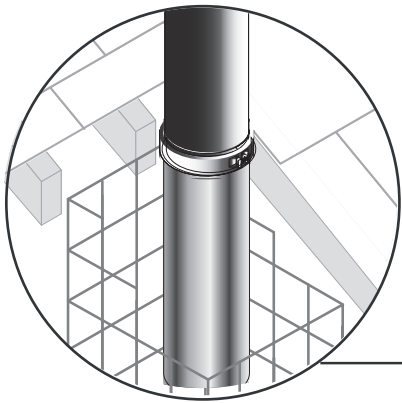
Rain Cap
Available in Black and Steel
See page 27 for information



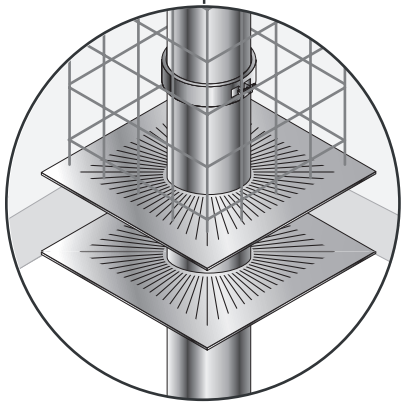
Angled Flashing
Available in Black and Steel
See page 30 for information



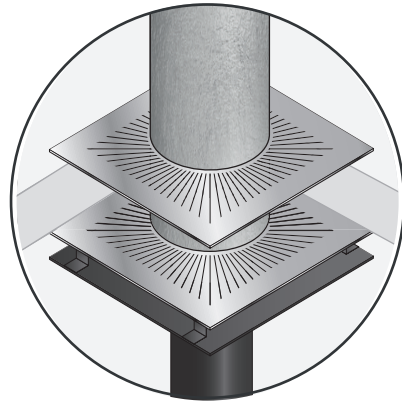
Ventilated Fire Stop
Available in Black and Steel
See page 36 for information



Protective Mesh Enclosure



Ventilated Fire Stop Detail
(Loft)



Ventilated Fire Stop Detail
(First Floor)

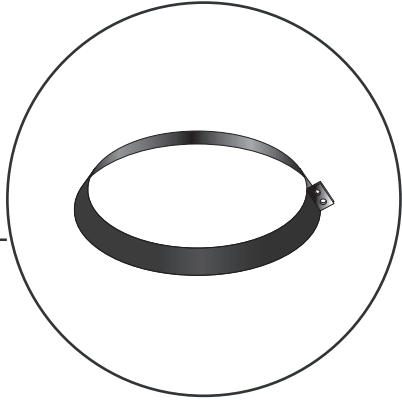
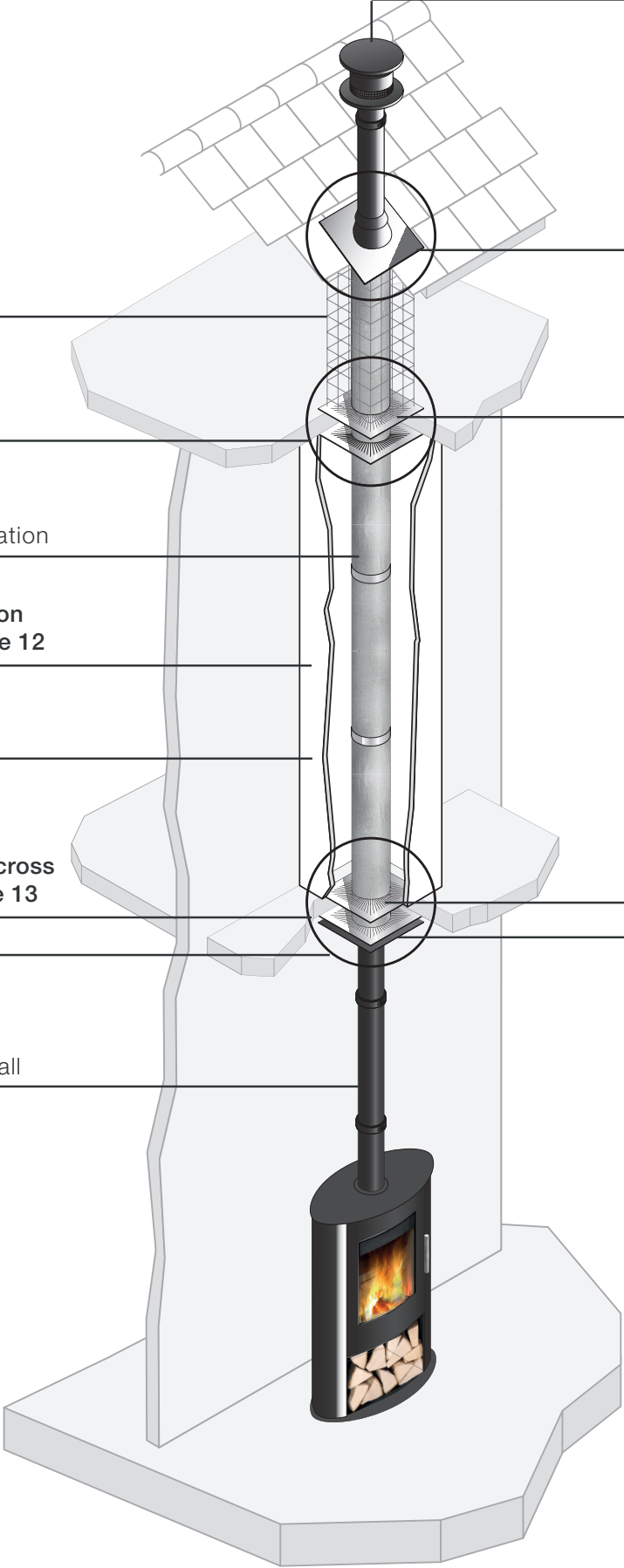
Black Twin Wall
with Wrap Insulation

See cross section
in detail on page 12

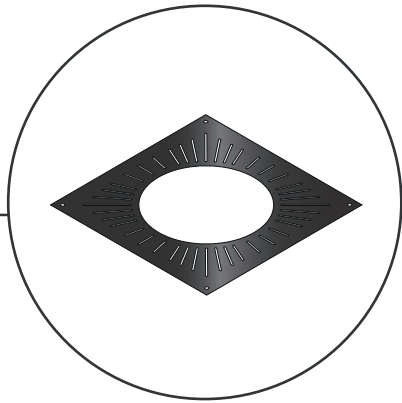
Shaft

See installation
detail showing cross
section on page 13

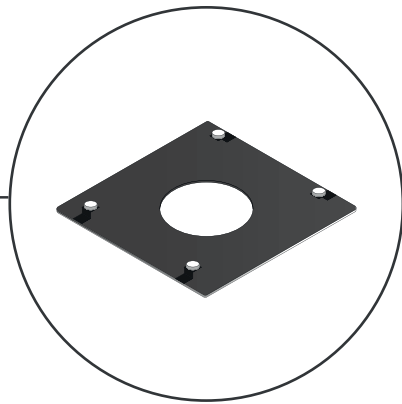
Black Twin Wall



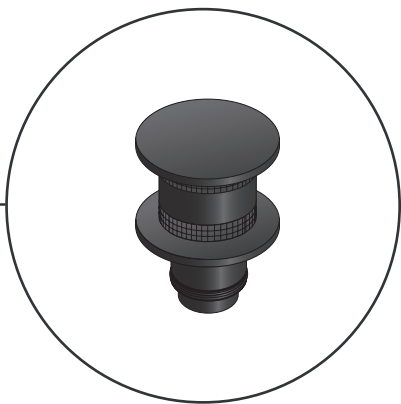
Storm Collar
Available in Black and Steel
See page 30 for information



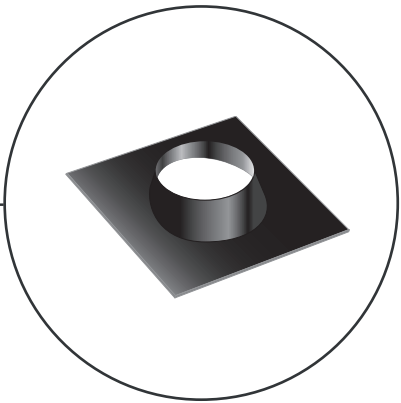
Ventilated Fire Stop
Available in Black and Steel
See page 36 for information



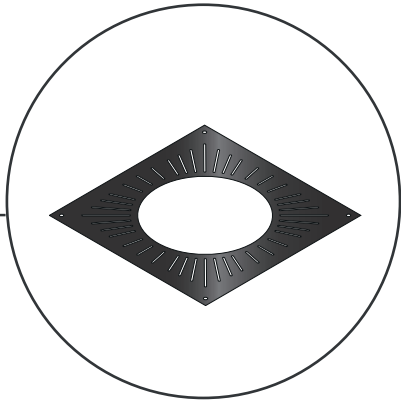
Magnetic Cover Plate
Available in Black and Steel
See page 37 for information



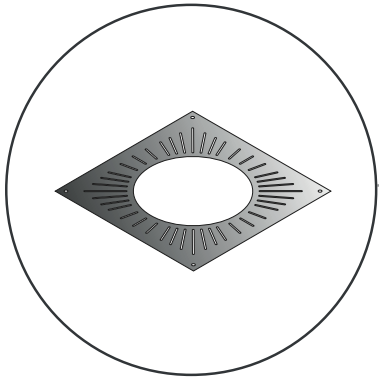
Anti Downdraught Cowl
Available in Black and Steel
See page 27 for information



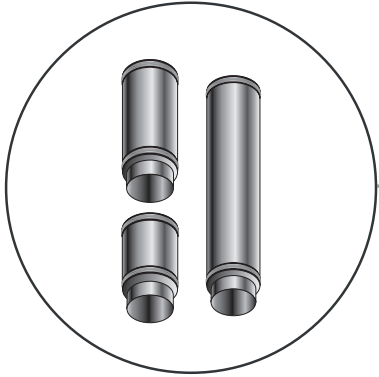
Angled Flashing
Available in Black and Steel
See page 30 for information



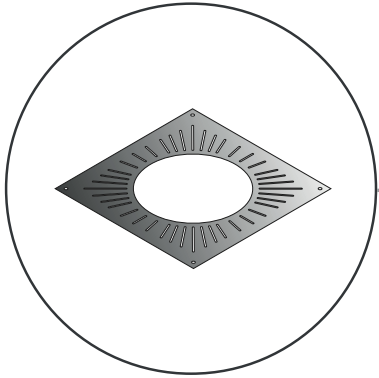
Ventilated Fire Stop
Available in Black and Steel
See page 36 for information



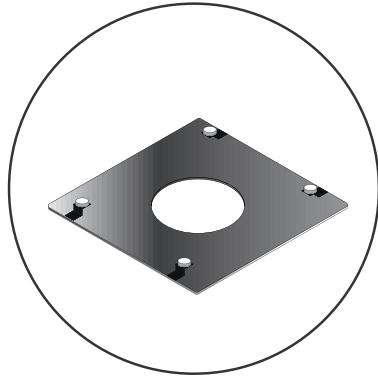
Ventilated Fire Stop Plate
See page 36 for details



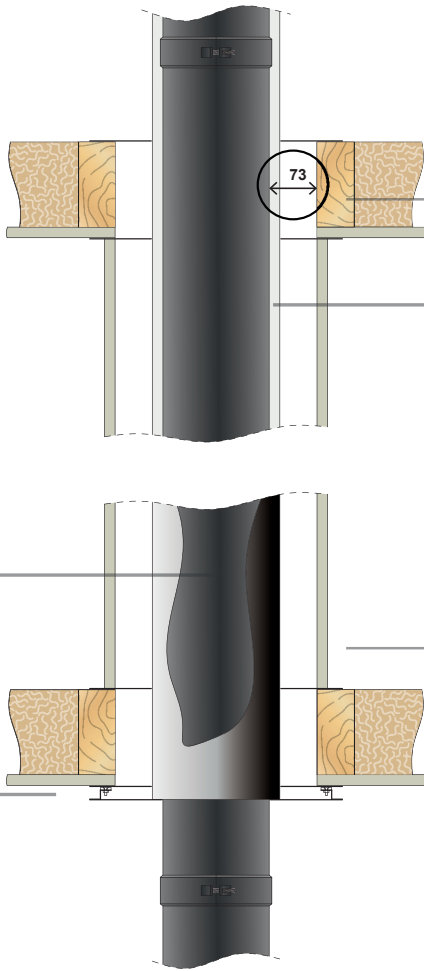
Typical Lengths
Available in Black and Steel
See page 18 for information



Ventilated Fire Stop Plate
See page 36 for details



Magnetic Cover Plate
See page 37 for details

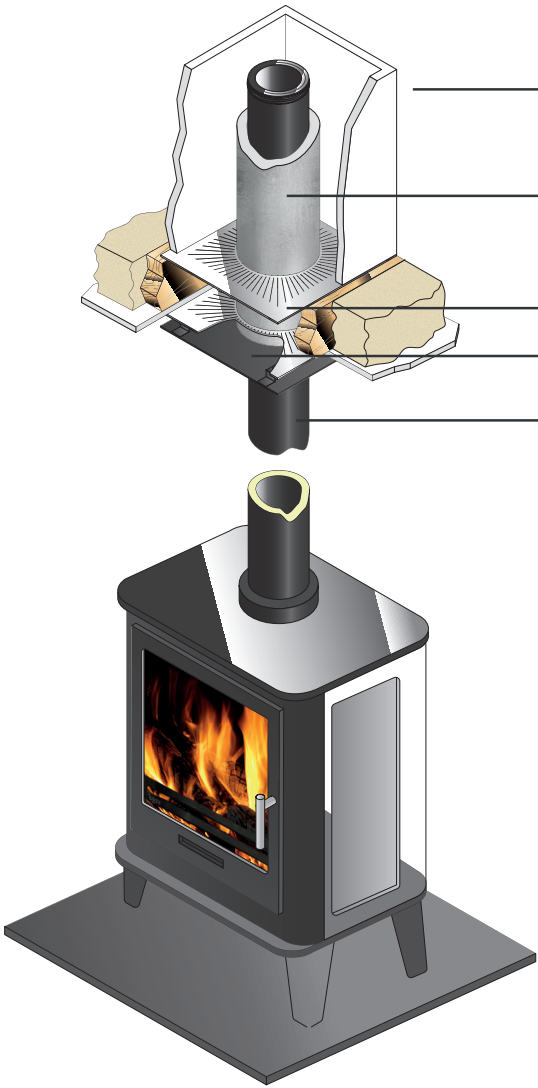


See page 10 for full installation diagram

Observe Clearance to Combustibles

Wrap Insulation

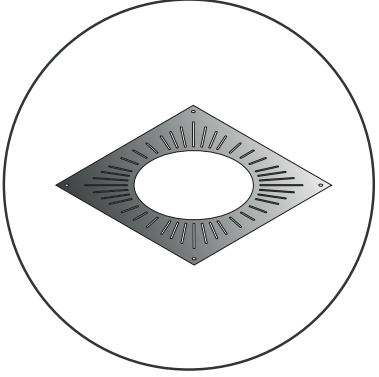
Observe Clearance to Combustibles



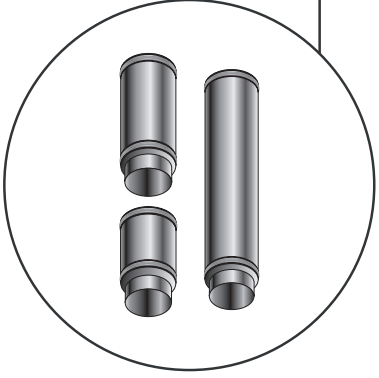
See page 10 for full installation diagram

Prefabricated Box/Building Fabric

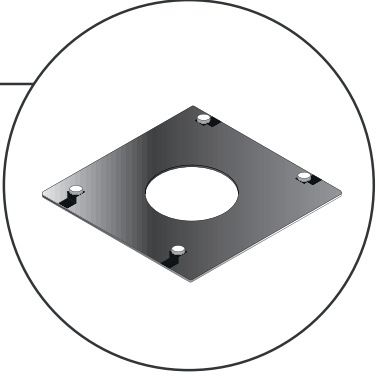
Insulation Wrap



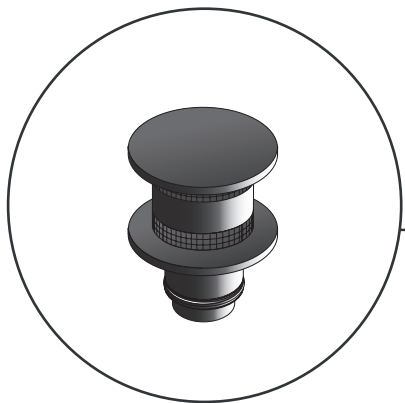
Ventilated Fire Stop Plate
Available in Black and Steel
See page 36 for information



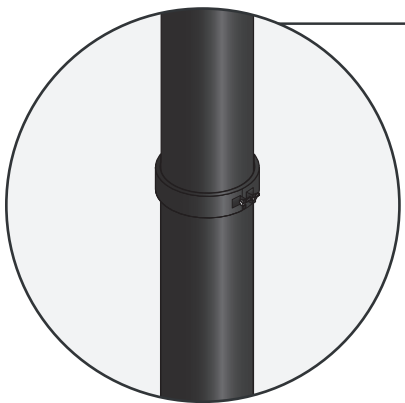
Typical Lengths
Available in Black and Steel
See page 18 for information



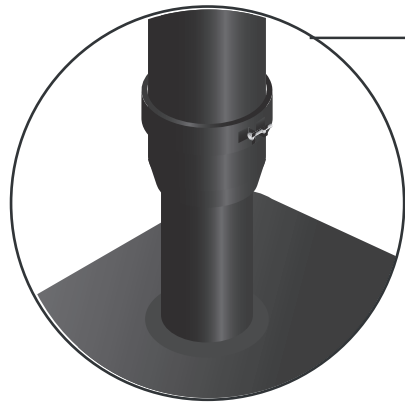
Magnetic Cover Plate
Available in Black and Steel
See page 37 for information



Anti Downdraught Cowl
Available in Black and Steel
See page 27 for information



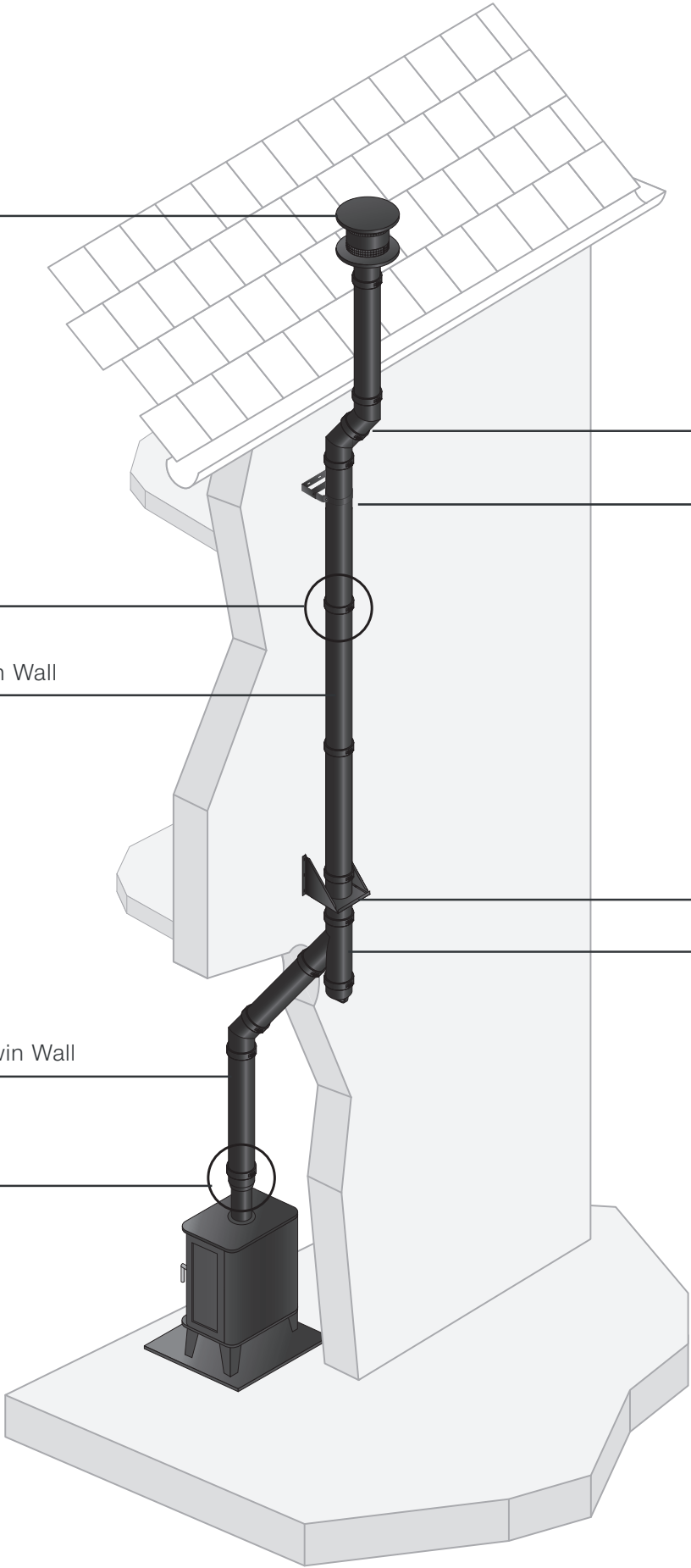
Locking Band
Available in Black and Steel
See page 34 for information



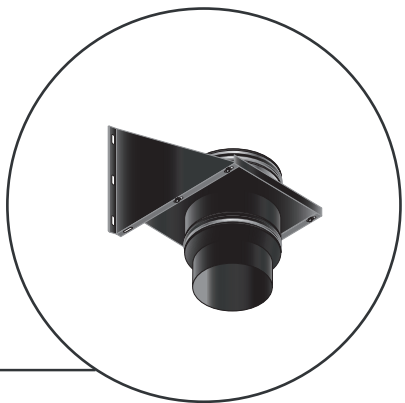
Tapered Adapter
Available in Black and Steel
See page 29 for information

Black Twin Wall

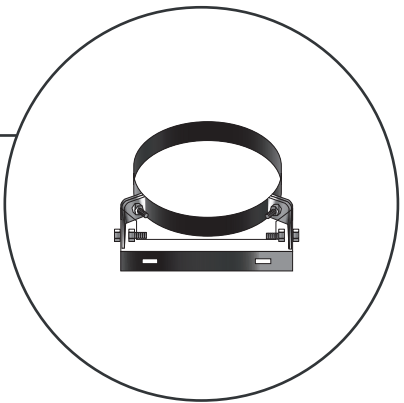
Black Twin Wall



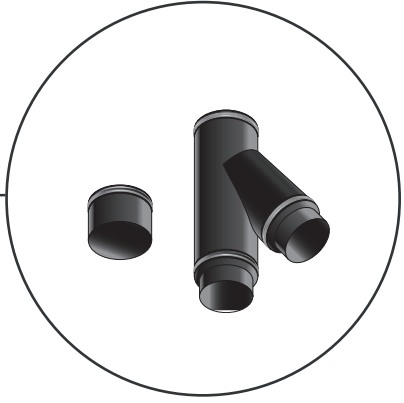
30/45° Bends
Available in Black and Steel
See page 21 & 22 for information



Chimney Support
Available in Black and Steel
See page 32 for information



Adjustable Wall Bracket
Available in Black and Steel
See page 33 for information



Tee with Cap
Available in Black and Steel
See page 25 for information

Regulations

Notice plates for hearths and flues

(Requirement J4)

- 1.57

Where a hearth, fireplace (including a flue box), flue or chimney is provided or extended (including cases where a flue is provided as part of the refurbishment work), information essential to the correct application and use of these facilities should be permanently posted in the building. A way of meeting this requirement would be to provide a notice plate as shown in Diagram 16 conveying the following information:
- a.

b.

c.

d.

the location of the hearth, fireplace (or flue box) or the location of the beginning of the flue

the category of the flue and generic types of appliances that can be safely accommodated

the type and size of the flue (or its liner if it has been relined) and the manufacturer’s name

the installation date.
- 1.58

Notice plates should be robust, indelibly marked and securely fixed in an unobtrusive but obvious position within the building such as:
- a.

b.

c.

next to the electricity consumer unit; or

next to the chimney or hearth described; or

next to the water supply stopcock.
- 1.59

For chimney products whose performance

Characteristics have been assessed in accordance with a European Standard (EN) and which are supplied or marked with a designation, the installer may optionally include this designation on the label as shown in Table 1 (pg 7).

Carbon monoxide alarms

- 2.34

Where a new or replacement fixed solid fuel appliance is installed in a dwelling, a carbon monoxide alarm should be provided in the room where the appliance is located.
- 2.35

Carbon monoxide alarms should comply with BS EN 50291:2001 and be powered by a battery designed to operate for the working life of the alarm. The alarm should incorporate a warning device to alert users when the working life of the alarm is due to pass. Mains-powered BS EN 50291 Type A carbon monoxide alarms with fixed wiring (not plug-in types) may be used as alternative applications provided they are fitted with a sensor failure warning device.
- 2.36

The carbon monoxide alarm should be located in the same room as the appliance:
- a.

b.

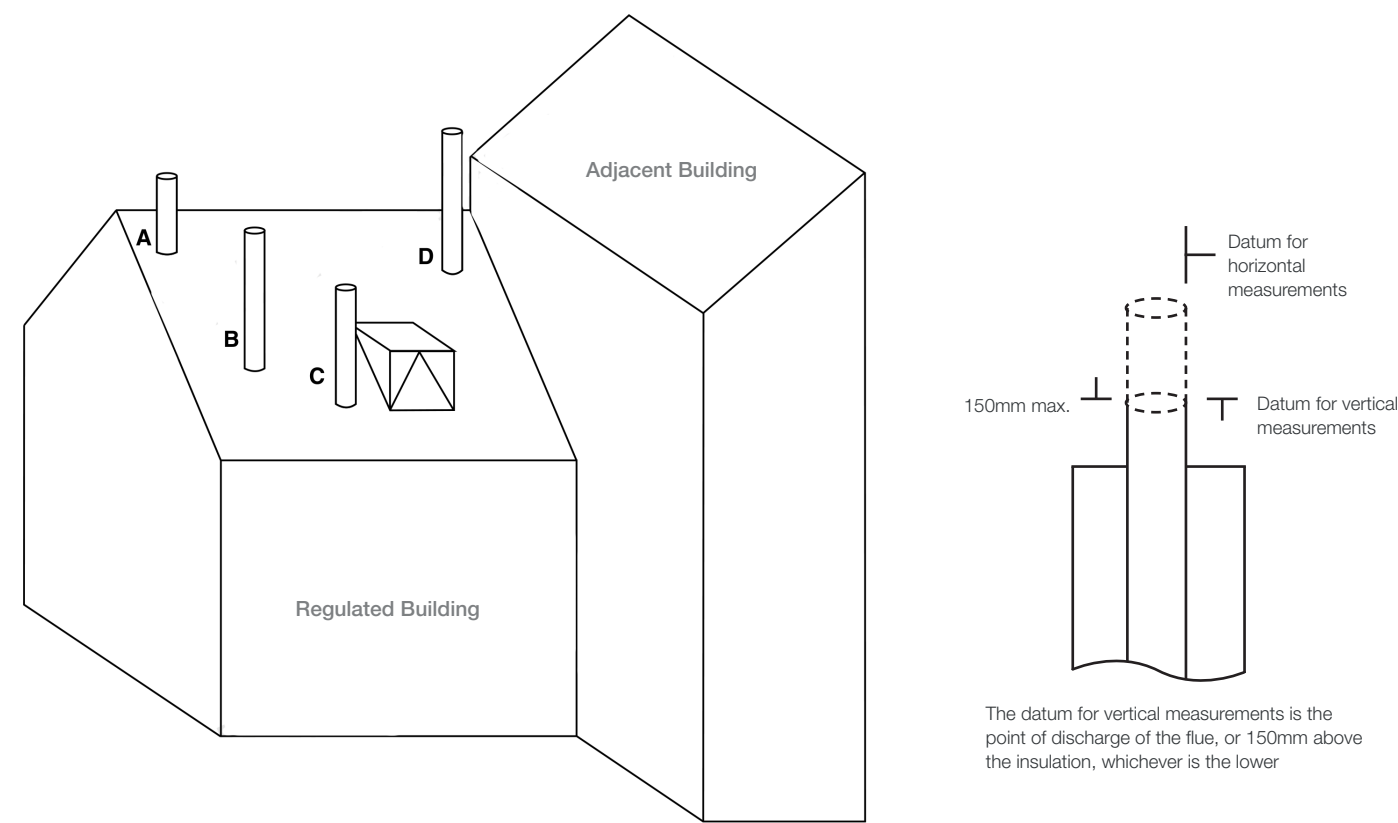
on the ceiling at least 300mm from any wall or, if it is located on a wall, as high up as possible (above any doors and windows) but not within 150mm of the ceiling; and

between 1m and 3m horizontally from the appliance.

Note: Further guidance on the installation of carbon monoxide alarms is available in BS EN 50292:2002 and from manufacturers’ instructions. Provision of an alarm should not be regarded as a substitute for correct installation and regular servicing.

Termination Points

Flue outlet positions for solid fuel appliances.



Point where flue passes through the weather surface (Notes 1, 2)		Clearances to flue outlet
A	At or within 600mm of the ridge	At least 600mm above the ridge
B	Elsewhere on a roof (whether pitched or flat)	At least 2300mm horizontally from the nearest point on the weather surface and: a) at least 1000mm above the highest point of intersection of the chimney and the weather surface; or b) at least as high as the ridge
C	Below (on a pitched roof) or within 2300mm horizontally to an openable rooflight, dormer window, or other opening (Note 3)	At least 1000mm above the top of the opening
D	Within 2300mm of an adjoining or adjacent building, whether or not beyond the boundary (Note 3)	At least 600mm above any part of the adjacent building within 2300mm

Notes:

1) The weather surface is the building external surface, such as its roof, tiles or external walls.

2) A flat roof has a pitch less than 10°.

3) The clearances given for A or B, as appropriate, will also apply.

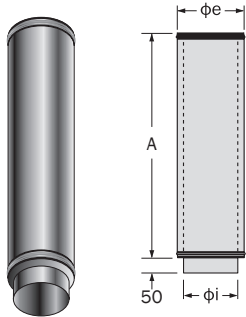
4) A vertical flue fixed to an outside wall should be treated as equivalent to an inside flue emerging at the nearest edge of the roof.

* Please see latest edition of building regulations on www.gov.uk website as information is updated regularly.

4” Straight Lengths 200/450/950

Available in Black

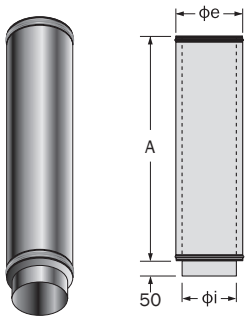
Code	Description	Measured in mm.		
		A	φi	φe
1430137	Black Straight Pipe	202	100	150
1430138	Black Straight Pipe	451	100	150
1430139	Black Straight Pipe	950	100	150



5” Straight Lengths 200/450/950

Available in Black & Stainless Steel

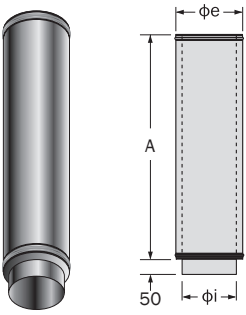
Code	Description	Measured in mm.		
		A	φi	φe
1430031	Black Straight Pipe	202	130	180
1430030	Black Straight Pipe	451	130	180
1430029	Black Straight Pipe	948	130	180
1430103	Stainless Steel Straight Pipe	202	130	180
1430105	Stainless Steel Straight Pipe	451	130	180
1430107	Stainless Steel Straight Pipe	948	130	180



6” Straight Lengths 200/450/950

Available in Black & Stainless Steel

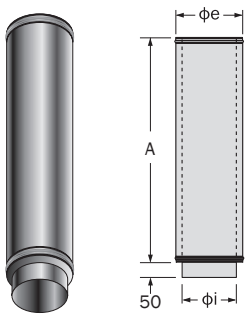
Code	Description	Measured in mm.		
		A	φi	φe
1430017	Black Straight Pipe	202	150	200
1430018	Black Straight Pipe	451	150	200
1430019	Black Straight Pipe	948	150	200
1430104	Stainless Steel Straight Pipe	202	150	200
1430106	Stainless Steel Straight Pipe	451	150	200
1430108	Stainless Steel Straight Pipe	948	150	200



7” Straight Lengths 200/450/950

Available in Stainless Steel

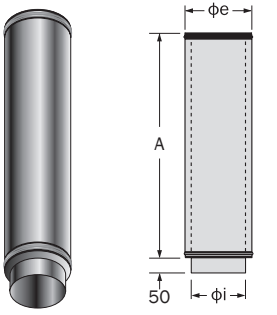
Code	Description	Measured in mm.		
		A	φi	φe
1430225	Stainless Steel Straight Pipe	202	180	230
1430224	Stainless Steel Straight Pipe	451	180	230
1430223	Stainless Steel Straight Pipe	948	180	230



8” Straight Lengths 200/450/950

Available in Stainless Steel

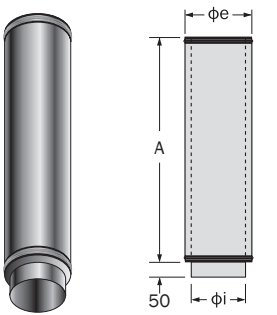
Code	Description	Measured in mm.		
		A	φi	φe
1430196	Stainless Steel Straight Pipe	202	200	250
1430198	Stainless Steel Straight Pipe	451	200	250
1430197	Stainless Steel Straight Pipe	948	200	250



10” Straight Lengths 200/450/950

Available in Stainless Steel

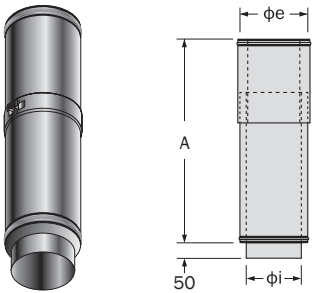
Code	Description	Measured in mm.		
		A	φi	φe
1430278	Stainless Steel Straight Pipe	200	250	300
1430279	Stainless Steel Straight Pipe	445	250	300
1430280	Stainless Steel Straight Pipe	943	250	300



Adjustable Straight Lengths

Available in Black & Stainless Steel

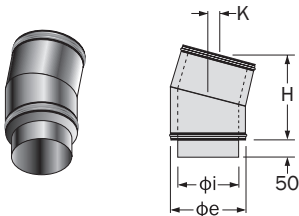
Code	Description	Measured in mm.		
		A	φi	φe
1430141	4" Black Adjustable Pipe	320-450	100	150
1430142	4" Black Adjustable Pipe	510-890	100	150
1430032	5" Black Adjustable Pipe	320-450	130	180
1430033	5" Black Adjustable Pipe	510-890	130	180
1430020	6" Black Adjustable Pipe	320-450	150	200
1430021	6" Black Adjustable Pipe	510-890	150	200
1430109	5" Stainless Steel Adjustable Pipe	320-450	130	180
1430111	5" Stainless Steel Adjustable Pipe	510-890	130	180
1430110	6" Stainless Steel Adjustable Pipe	320-450	150	200
1430112	6" Stainless Steel Adjustable Pipe	510-890	150	200
1430227	7" Stainless Steel Adjustable Pipe	320-450	180	230
1430226	7" Stainless Steel Adjustable Pipe	510-890	180	230
1430200	8" Stainless Steel Adjustable Pipe	320-450	200	250
1430199	8" Stainless Steel Adjustable Pipe	510-890	200	250
1430281	10" Stainless Steel Adjustable Pipe	320-450	250	300
1430282	10" Stainless Steel Adjustable Pipe	510-0	250	300



15° Bends

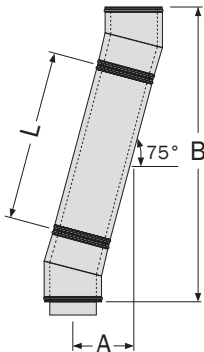
Available in Black & Stainless Steel

Measured in mm.			
Code	Description	φi	φe
1430148	4" Black 15° Bend	100	150
1430037	5" Black 15° Bend	130	180
1430006	6" Black 15° Bend	150	200
1430077	5" Stainless Steel 15° Bend	130	180
1430078	6" Stainless Steel 15° Bend	150	200
1430235	7" Stainless Steel 15° Bend	180	230
1430201	8" Stainless Steel 15° Bend	200	250
1430269	10" Stainless Steel 15° Bend	250	300



15° Bends - Assembly Information

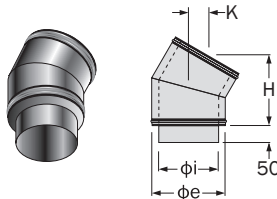
Measured in mm.						
φi	φe	H	K	L	A	B
100	150	215	27	0	57	430
				202	109	625
				451	173	865
				950	302	1347
130	180	219	30	0	58	438
				202	110	633
				451	174	874
				948	303	1354
150	200	224	29	0	59	448
				202	111	643
				451	176	884
				948	304	1364
180	230	230	30	0	61	460
				202	113	655
				451	177	896
				948	306	1376
200	250	226	30	0	60	452
				202	112	647
				451	176	888
				948	305	1368
250	300	233	30	0	61	466
				200	113	659
				445	177	896
				943	305	1377



30° Bends

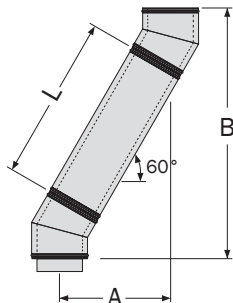
Available in Black & Stainless Steel

Measured in mm.			
Code	Description	φi	φe
1430135	4" Black 30° Bend	100	150
1430036	5" Black 30° Bend	130	180
1430007	6" Black 30° Bend	150	200
1430079	5" Stainless Steel 30° Bend	130	180
1430080	6" Stainless Steel 30° Bend	150	200
1430234	7" Stainless Steel 30° Bend	180	230
1430202	8" Stainless Steel 30° Bend	200	250
1430270	10" Stainless Steel 30° Bend	250	300



30° Bends - Assembly Information

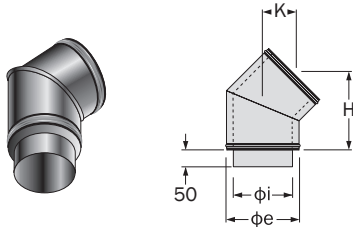
Measured in mm.						
φi	φe	H	K	L	A	B
100	150	199	50	0	106	396
				202	207	571
				451	332	787
				950	581	1219
130	180	246	70	0	132	494
				202	233	669
				451	358	885
				948	606	1315
150	200	210	55	0	112	419
				202	213	594
				451	338	810
				948	586	1240
180	230	212	55	0	113	423
				202	214	598
				451	339	814
				948	587	1244
200	250	214	55	0	114	427
				202	215	602
				451	340	817
				948	588	1248
250	300	227	59	0	121	453
				200	221	626
				445	344	838
				943	593	1270



45° Bends

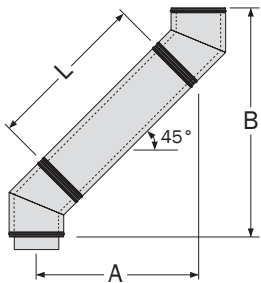
Available in Black & Stainless Steel

Code	Description	Measured in mm.	
		ϕi	ϕe
1430136	4" Black 45° Bend	100	150
1430035	5" Black 45° Bend	130	180
1430008	6" Black 45° Bend	150	200
1430083	5" Stainless Steel 45° Bend	130	180
1430084	6" Stainless Steel 45° Bend	150	200
1430233	7" Stainless Steel 45° Bend	180	230
1430203	8" Stainless Steel 45° Bend	200	250
1430272	10" Stainless Steel 45° Bend	250	300



45° Bends - Assembly Information

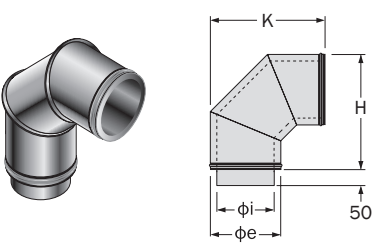
Measured in mm.						
ϕi	ϕe	H	K	L	A	B
100	150	203	85	0	168	407
				202	311	549
				451	487	726
				950	840	1078
130	180	200	85	0	166	402
				202	309	544
				451	485	720
				948	837	1072
150	200	213	85	0	176	424
				202	318	567
				451	494	743
				948	846	1094
180	230	226	90	0	186	449
				202	329	592
				451	505	768
				948	857	1120
200	250	229	97	0	190	460
				202	333	602
				451	509	778
				948	861	1130
250	300	244	102	0	202	489
				200	344	630
				445	517	803
				943	869	1155



90° Bends

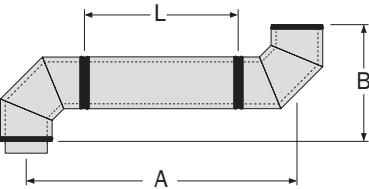
Available in Black & Stainless Steel

Code	Description	Measured in mm.	
		ϕi	ϕe
	4" Black 90° Bend	100	150
1430034	5" Black 90° Bend	130	180
1430010	6" Black 90° Bend	150	200
1430087	5" Stainless Steel 90° Bend	130	180
1430088	6" Stainless Steel 90° Bend	150	200
1430232	7" Stainless Steel 90° Bend	180	230
1430204	8" Stainless Steel 90° Bend	200	250
1430274	10" Stainless Steel 90° Bend	250	300



90° Bends - Assembly Information

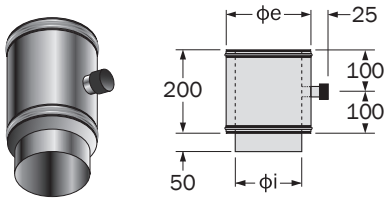
Measured in mm.						
ϕi	ϕe	H	K	L	A	B
100	150	264	267	0	381	381
				202	583	381
				451	832	381
				950	1331	381
130	180	295	297	0	412	412
				202	614	412
				451	863	412
				948	1360	412
150	200	314	315	0	429	429
				202	631	429
				451	880	429
				948	1377	429
180	230	343	342	0	455	455
				202	657	455
				451	906	455
				948	1403	455
200	250	363	366	0	479	479
				202	681	479
				451	930	479
				948	1427	479
250	300	407	417	0	524	524
				200	724	524
				445	969	524
				943	1467	524



Straight Pipe with Test Point

Available in Black & Stainless Steel

Measured in mm.			
Code	Description	φi	φe
1430259	5" Black Straight Pipe with Test Point	130	180
1430261	6" Black Straight Pipe with Test Point	150	200
1430260	5" Stainless Steel Straight Pipe with Test Point	130	180
1430262	6" Stainless Steel Straight Pipe with Test Point	150	200
1430263	7" Stainless Steel Straight Pipe with Test Point	180	230
1430264	8" Stainless Steel Straight Pipe with Test Point	200	250

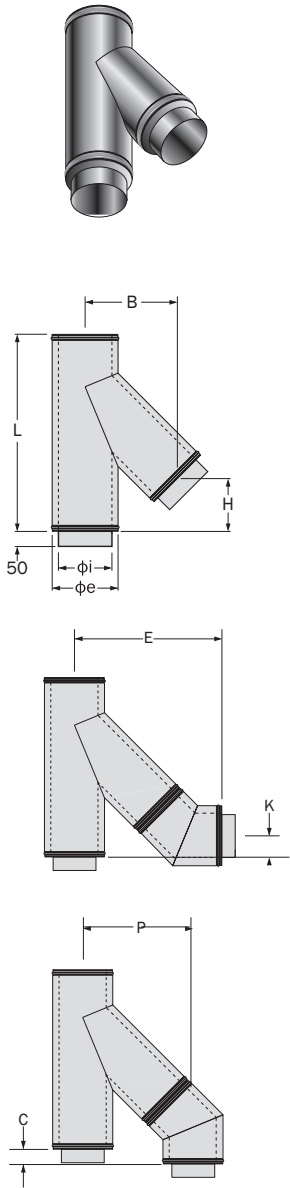


Flue Pipe Tees

45° Tee

Available in Black & Stainless Steel

Measured in mm.			
Code	Description	φi	φe
1430254	4" Black 45° Tee	100	150
1430056	5" Black 45° Tee	130	180
1430057	6" Black 45° Tee	150	200
1430081	5" Stainless Steel 45° Tee	130	180
1430082	6" Stainless Steel 45° Tee	150	200
1430229	7" Stainless Steel 45° Tee	180	230
1430206	8" Stainless Steel 45° Tee	200	250
1430271	10" Stainless Steel 45° Tee	250	300



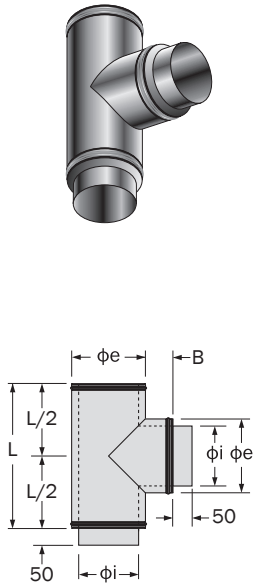
45° Tee Sizes

Measured in mm.								
φi	φe	L	B	E	H	K	C	P
100	150	363	184	387	73	-	130	269
130	180	405	210	410	82	-	118	295
150	200	435	227	440	90	5	123	312
180	230	475	253	479	100	10	126	343
200	250	505	270	499	108	11	121	367
250	300	625	313	557	150	48	94	415

90° Tee

Available in Black & Stainless Steel

Measured in mm.			
Code	Description	φi	φe
1430038	5" Black 90° Tee	130	180
1430009	6" Black 90° Tee	150	200
1430085	5" Stainless Steel 90° Tee	130	180
1430086	6" Stainless Steel 90° Tee	150	200
1430228	7" Stainless Steel 90° Tee	180	230
1430205	8" Stainless Steel 90° Tee	200	250
1430273	10" Stainless Steel 90° Tee	250	300



90° Tee Sizes

Measured in mm.			
φi	φe	L	B
130	180	280	55
150	200	300	55
180	230	330	55
200	250	350	55
250	300	450	75

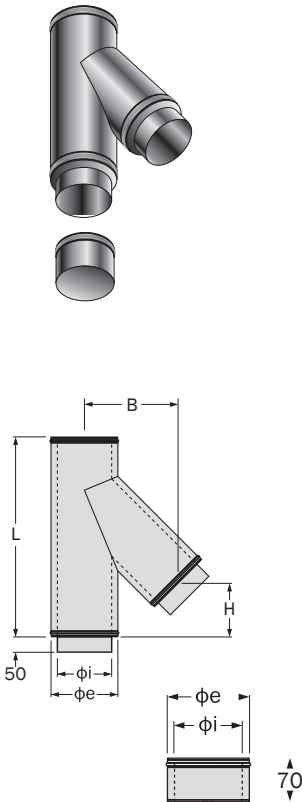
45° Tee with Cap

Available in Black & Stainless Steel

Measured in mm.			
Code	Description	φi	φe
1430064	5" Black 45° Tee with Cap	130	180
1430065	6" Black 45° Tee with Cap	150	200
1430129	5" Stainless Steel 45° Tee with Cap	130	180
1430130	6" Stainless Steel 45° Tee with Cap	150	200

45° Tee with Cap Sizes

Measured in mm.				
φi	φe	L	B	H
130	180	405	210	82
150	200	435	227	90



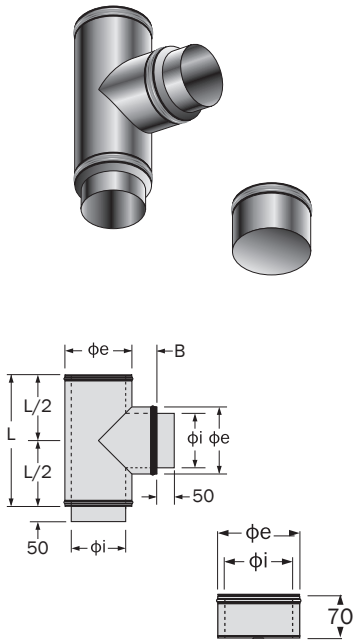
90° Tee with Cap

Available in Black & Stainless Steel

Code	Description	Measured in mm.	
		φi	φe
1430066	5" Black 90° Tee with Cap	130	180
1430067	6" Black 90° Tee with Cap	150	200
1430131	5" Stainless Steel 90° Tee with Cap	130	180
1430132	6" Stainless Steel 90° Tee with Cap	150	200

90° Tee with Cap Sizes

Measured in mm.			
φi	φe	L	B
130	180	280	55
150	200	300	55

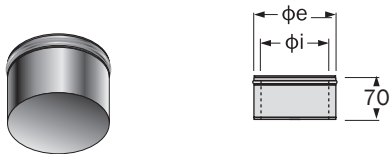


Tee Caps

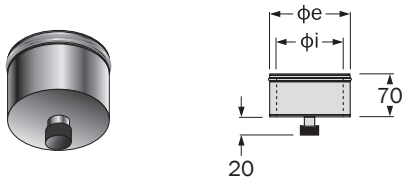
Available in Black & Stainless Steel

Code	Description	Measured in mm.	
		φi	φe
1430151	4" Black Tee Cap without Drain	100	150
1430058	5" Black Tee Cap without Drain	130	180
1430059	6" Black Tee Cap without Drain	150	200
1430123	5" Stainless Steel Tee Cap without Drain	130	180
1430124	6" Stainless Steel Tee Cap without Drain	150	200
1430231	7" Stainless Steel Tee Cap without Drain	180	230
1430230	7" Stainless Steel Tee Cap with Drain	180	230
1430215	8" Stainless Steel Tee Cap without Drain	200	250
1430217	8" Stainless Steel Tee Cap with Drain	200	250
1430287	10" Stainless Steel Tee Cap without Drain	250	300
1430288	10" Stainless Steel Tee Cap with Drain	250	300

Stainless Steel Tee Cap Without Drain



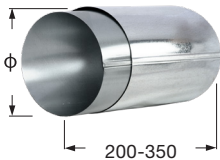
Stainless Steel Tee Cap with Drain



Adjustable Wall Sleeve

This item is 50mm larger than the internal diameter of the flue pipe, providing protection when passing through a non-combustible wall. The sleeve is adjustable and can be secured with self-tapping screws.

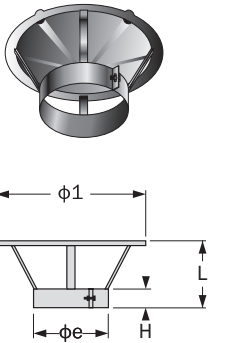
Measured in mm.			
Code	Description	L	Ø
1450158	5" Adjustable Wall Sleeve	200 - 350	235
1450068	6" Adjustable Wall Sleeve	200 - 350	255



Rain Cap

Available in Black & Stainless Steel

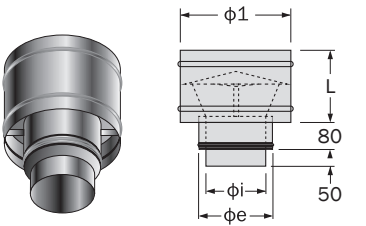
Code	Description	Measured in mm.				
		H	L	φ1	φi	φe
1430143	4" Black Rain Cap	30	165	300	100	150
1430041	5" Black Rain Cap	30	185	350	130	180
1430022	6" Black Rain Cap	30	197	400	150	200
1430113	5" Stainless Steel Rain Cap	30	185	350	130	180
1430114	6" Stainless Steel Rain Cap	30	197	400	150	200
1430236	7" Stainless Steel Rain Cap	30	213	450	180	230
1430211	8" Stainless Steel Rain Cap	30	210	500	200	250
1430283	10" Stainless Steel Rain Cap	30	245	600	250	300



Weathering Cap

Available in Black & Stainless Steel

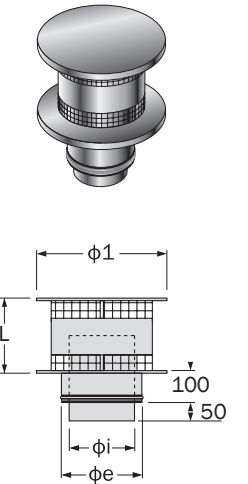
Code	Description	Measured in mm.			
		L	φ1	φi	φe
1430043	5" Black Weathering Cap	250	350	130	180
1430028	6" Black Weathering Cap	250	350	150	200
1430127	5" Stainless Steel Weathering Cap	250	350	130	180
1430128	6" Stainless Steel Weathering Cap	250	350	150	200



Anti Downdraught Cowl

Available in Black & Stainless Steel

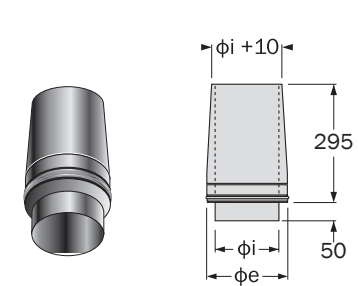
Code	Description	Measured in mm.			
		L	φ1	φi	φe
1430253	4" Black Anti Downdraught Cowl	140	250	100	150
1430044	5" Black Anti Downdraught Cowl	140	250	130	180
1430012	6" Black Anti Downdraught Cowl	165	300	150	200
1430091	5" Stainless Steel Anti Downdraught Cowl	140	250	130	180
1430092	6" Stainless Steel Anti Downdraught Cowl	165	300	150	200
1430237	7" Stainless Steel Anti Downdraught Cowl	200	350	180	230
1430214	8" Stainless Steel Anti Downdraught Cowl	220	400	200	250
1430276	10" Stainless Steel Anti Downdraught Cowl	275	500	250	300



Top Stub

Available in Black & Stainless Steel

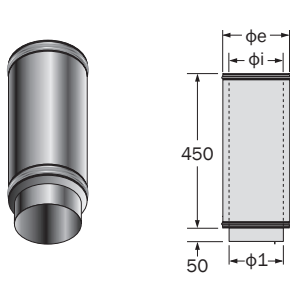
Measured in mm.			
Code	Description	φi	φe
1430042	5" Black Top Stub	130	180
1430027	6" Black Top Stub	150	200
1430125	5" Stainless Steel Top Stub	130	180
1430126	6" Stainless Steel Top Stub	150	200
1430238	7" Stainless Steel Top Stub	180	230
1430213	8" Stainless Steel Top Stub	200	250



Starter Pipe

Available in Black

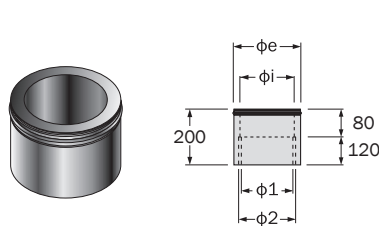
Measured in mm.				
Code	Description	φ1	φi	φe
1430192	4" Black Starter Pipe x 450mm	99	100	150
1430191	4-5" Black Starter Pipe x 450mm	99	130	180
1430194	5" Black Starter Pipe x 450mm	124	130	180
1430193	5-6" Black Starter Pipe x 450mm	124	150	200
1430195	6" Black Starter Pipe x 450mm	150	150	200



Adjustable Adaptors

Available in Black & Stainless Steel

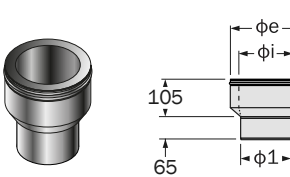
Measured in mm.					
Code	Description	φ1	φ2	φi	φe
1430170	5" Black Adaptor	124	134	130	180
1430172	6" Black Adaptor	150	161	150	200
1430171	5" Stainless Steel Adaptor	124	134	130	180
1430173	6" Stainless Steel Adaptor	150	161	150	200



Tapered Adaptor

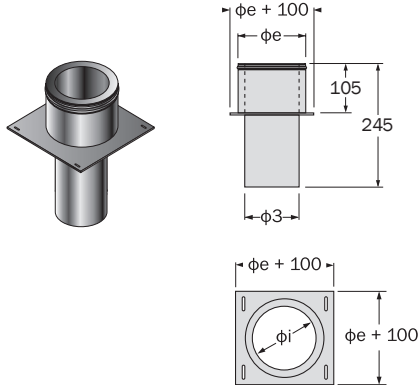
Available in Black & Stainless Steel

Measured in mm.				
Code	Description	φ1	φi	φe
1430134	4" Black Tapered Adaptor	99	100	150
1430160	4-5" Black Tapered Adaptor	99	130	180
1430047	5" Black Tapered Adaptor	124	130	180
1430004	5-6" Black Tapered Adaptor	124	150	200
1430005	6" Black Tapered Adaptor	149	150	200
1430161	4-5" Stainless Steel Tapered Adaptor	99	130	180
1430075	5" Stainless Steel Tapered Adaptor	124	130	180
1430074	5-6" Stainless Steel Tapered Adaptor	124	150	200
1430076	6" Stainless Steel Tapered Adaptor	149	150	200
1430240	7" Stainless Steel Tapered Adaptor	179	180	230
1430216	8" Stainless Steel Tapered Adaptor	199	200	250
1430268	10" Stainless Steel Tapered Adaptor	245	250	300



Flex To Twin Wall Adaptor C/W Plate

			Measured in mm	
Code	Description	φ3	φi	φe
1430255	5" Flex To Twin Wall Adaptor Plate	121	130	180
1430256	6" Flex To Twin Wall Adaptor Plate	146	150	200



Silicone Seal

*Used with condensing appliances

Measured in mm.

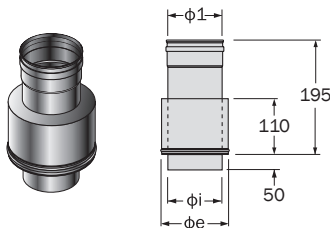
Code	Description	φi	φe
1430060	5" Silicone Seal	130	180
1430061	6" Silicone Seal	150	200
1430245	7" Silicone Seal	180	230
1430209	8" Silicone Seal	200	250



Twin Wall to Flex Adaptor

Available in Stainless Steel

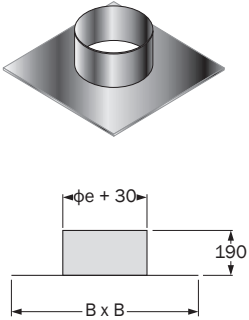
Measured in mm.				
CODE	Description	φ1	φi	φe
1430257	5" Stainless Steel Twin Wall to Flex Adaptor	135	130	180
1430258	6" Stainless Steel Twin Wall to Flex Adaptor	160	150	200



Flashing (Flat)

Available in Black & Stainless Steel

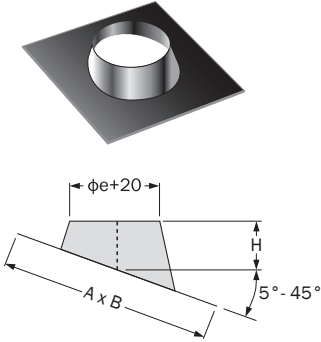
Code	Description	Measured in mm.		
		B	φi	φe
1430054	5" Black Flashing (Flat)	410	130	180
1430014	6" Black Flashing (Flat)	430	150	200
1430097	5" Stainless Steel Flashing (Flat)	410	130	180
1430098	6" Stainless Steel Flashing (Flat)	430	150	200



Flashing (Angled)

Available in Black & Stainless Steel

Code	Description	H	A	B	Measured in mm.	
					φi	φe
1430055	5" Black Flashing (Angled)	212	750	600	130	180
1430013	6" Black Flashing (Angled)	216	1000	630	150	200
1430095	5" Stainless Steel Flashing (Angled)	212	750	600	130	180
1430096	6" Stainless Steel Flashing (Angled)	216	1000	630	150	200



Storm Collar

Available in Black & Stainless Steel

Code	Description	Measured in mm.	
		φi	φe
1430186	4" Black Storm Collar	100	150
1430051	5" Black Storm Collar	130	180
1430025	6" Black Storm Collar	150	200
1430119	5" Stainless Steel Storm Collar	130	180
1430120	6" Stainless Steel Storm Collar	150	200
1430242	7" Stainless Steel Storm Collar	180	230
1430208	8" Stainless Steel Storm Collar	200	250
1430286	10" Stainless Steel Storm Collar	250	300



Dektite Multi Application Flashing

Available in Black

Code	Description	Base Size
0350039	0-45° Black Dektite Flashing 150-300	456 x 456
0350092	0-45° Black Dektite Flashing 100-200	310 X 310



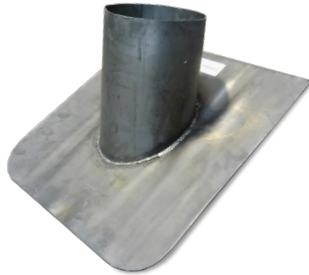
Seldek Tile & Slate Roof Flashing

Code	Description	Measured in mm.
		Base Size
0350040	50-170mm Pipe External & 0-45° Roof Pitch	500 x 600
0350041	110-200mm Pipe External & 0-45° Roof Pitch	600 x 600
0350093	160-300mm Pipe External & 0-45° Roof Pitch	764 x 764
0350101	175-330mm Seldek Nu-Lead 0-45°	850 x 550
0350102	150-280mm Aluminium Pitched 20-45° Black EPDM	764 x 764



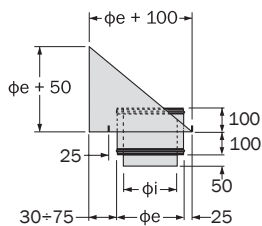
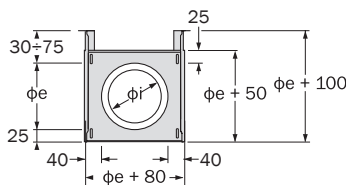
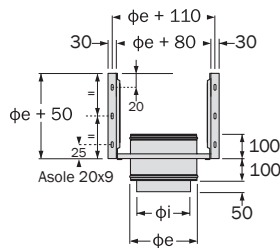
Lead Flashing

Code	Description	Measured in mm.	
		φi	φe
0350023	15° Lead Flashing 20" Square	7" / 180	190
0350024	15° Lead Flashing 20" Square	8" / 200	215
0350025	30° Lead Flashing 18" Square	4" / 100	115
0350026	30° Lead Flashing 18" Square	5" / 130	145
0350027	30° Lead Flashing 18" Square	6" / 150	160
0350028	30° Lead Flashing 20" Square	7" / 180	190
0350029	30° Lead Flashing 24" Square	8" / 200	215
0350030	45° Lead Flashing 18" Square	4" / 100	115
0350031	45° Lead Flashing 18" Square	5" / 130	145
0350032	45° Lead Flashing 450 x 500mm	6" / 150	160
0350033	45° Lead Flashing 500 x 600mm	7" / 180	190
0350034	45° Lead Flashing 600 x 650mm	8" / 200	215



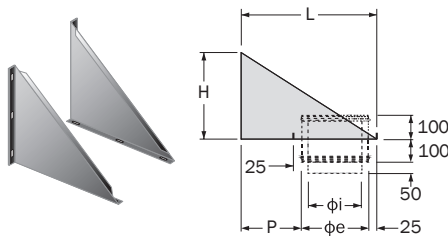
Chimney Support

		Measured in mm.	
Code	Description	φi	φe
1430039	5" Black Chimney Support	130	180
1430011	6" Black Chimney Support	150	200
1430089	5" Stainless Steel Chimney Support	130	180
1430090	6" Stainless Steel Chimney Support	150	200
1430239	7" Stainless Steel Chimney Support	180	230
1430222	8" Stainless Steel Chimney Support	200	250
1430275	10" Stainless Steel Chimney Support	250	300



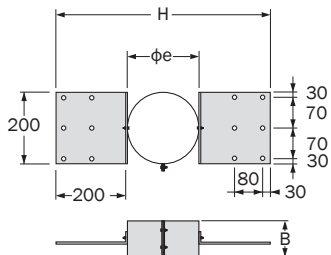
Extension for Chimney Support

						Measured in mm	
Code	Description	L	H	P	φi	φe	
1430162	5" Black	470	230	265	130	180	
1430164	6" Black	470	250	245	150	200	
1430163	5" Stainless Steel	470	230	265	130	180	
1430165	6" Stainless Steel	470	250	245	150	200	



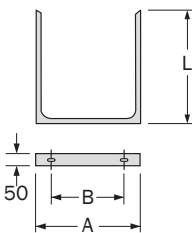
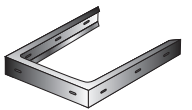
Roof Support

		Measured in mm.			
Code	Description	B	H	φi	φe
1430040	5" Black Roof Support	60	611	130	180
1430023	6" Black Roof Support	80	631	150	200
1430115	5" Stainless Steel Roof Support	60	611	130	180
1430116	6" Stainless Steel Roof Support	80	631	150	200
1430243	7" Stainless Steel Roof Support	80	661	180	230
1430207	8" Stainless Steel Roof Support	80	681	200	250
1430284	10" Stainless Steel Roof Support	80	731	250	300



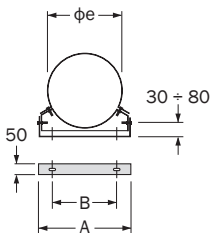
Adjustable Extension for Standard Wall Bracket

						Measured in mm.	
Code	Description	L	A	B	φi	φe	
1430169	4" Black	500	176	94	100	150	
1430156	5" Black	500	198	118	130	180	
1430158	6" Black	500	219	141	150	200	
1430157	5" Stainless Steel	500	198	118	130	180	
1430159	6" Stainless Steel	500	219	141	150	200	



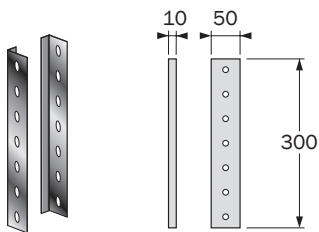
Standard Wall Bracket

		Measured in mm.			
Code	Description	A	B	φi	φe
1430144	4" Black Standard Wall Bracket	170	94	100	150
1430048	5" Black Standard Wall Bracket	192	118	130	180
1430024	6" Black Standard Wall Bracket	213	141	150	200
1430117	5" Stainless Steel Standard Wall Bracket	192	118	130	180
1430118	6" Stainless Steel Standard Wall Bracket	213	141	150	200
1430241	7" Stainless Steel Standard Wall Bracket	242	168	180	230
1430265	8" Stainless Steel Standard Wall Bracket	262	188	200	250
1430285	10" Stainless Steel Standard Wall Bracket	312	238	250	300



Adjustable Wall Extension Kit to suit Standard Wall Brackets

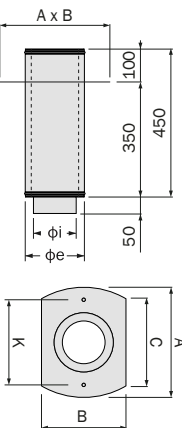
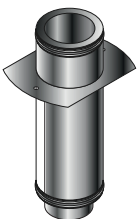
Code	Description
1430188	Black Adjustable Wall Extension kit to suit Standard Wall Brackets
1430189	Stainless Steel Adjustable Wall Extension kit to suit Standard Wall Brackets



Through the Roof Section

Available in Black

		Measured in mm.					
Code	Description	A	B	K	C	φi	φe
1430145	4" Black Through the Roof Section	312	230	240	240	100	150
1430146	5" Black Through the Roof Section	335	257	259	265	130	180



Roof Brace Kit

Available in Black. Includes 2 galvanised mild steel telescopic extension poles, 2 roof brackets and a support ring. Poles adjust from 1900mm to 3400mm. Provides additional support above the roof line.

Code	Description	Measured in mm.	
		ϕi	ϕe
0350119	5" Black Roof Brace Kit Universal	130	180
0350121	6" Black Roof Brace Kit Universal	150	200
0350120	5" Silver Roof Brace Kit Universal	130	180
0350122	6" Silver Roof Brace Kit Universal	150	200



Clax Insulation Wrap

The Clax insulation wrap can be used to reduce the clearance to combustible surfaces, when installing with the DPNC chimney system.

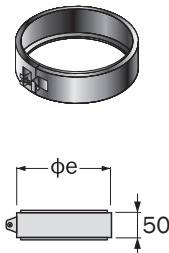
Code	Description	L	Measured in mm.	
			ϕi	ϕe
1430300	4" Clax Insulation Wrap	950	100	150
1430301	5" Clax Insulation Wrap	950	130	180
1430302	6" Clax Insulation Wrap	950	150	200
1430303	Insulation Adhesive Tape 50m Roll			



Locking Band

Available in Black & Stainless Steel

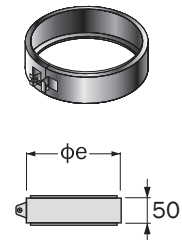
Code	Description	Measured in mm.	
		ϕi	ϕe
1430045	5" Black Locking Band	130	180
1430016	6" Black Locking Band	150	200
1430101	5" Stainless Steel Locking Band	130	180
1430102	6" Stainless Steel Locking Band	150	200
1430244	7" Stainless Steel Locking Band	180	230
1430210	8" Stainless Steel Locking Band	200	250



HT Locking Band (to be used with starter pipe only)

Available in Black

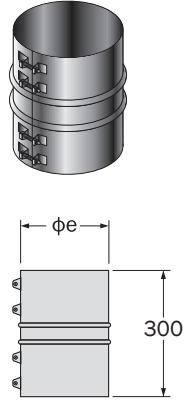
Code	Description	Measured in mm.	
		ϕi	ϕe
1400297	4" Black HT Locking Band (only to be used with starter pipe)	100	150
1430266	5" Black HT Locking Band (only to be used with starter pipe)	130	180
1430267	6" Black HT Locking Band (only to be used with starter pipe)	150	200



Structural Locking Band

Available in Black & Stainless Steel

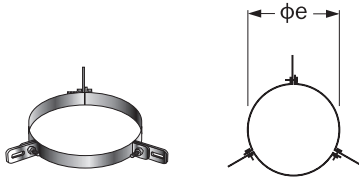
Code	Description	Measured in mm.	
		ϕi	ϕe
1430046	5" Black Structural Locking Band	130	180
1430026	6" Black Structural Locking Band	150	200
1430121	5" Stainless Steel Structural Locking Band	130	180
1430122	6" Stainless Steel Structural Locking Band	150	200
1430246	7" Stainless Steel Structural Locking Band	180	230
1430220	8" Stainless Steel Structural Locking Band	200	250
1430293	10" Stainless Steel Structural Locking Band	250	300



Guy Wire Bracket

Available in Black & Stainless Steel

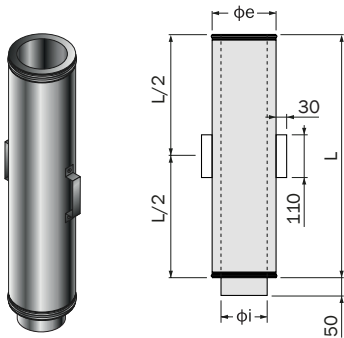
Code	Description	Measured in mm.	
		ϕi	ϕe
1430050	5" Black Guy Wire Bracket	130	180
1430015	6" Black Guy Wire Bracket	150	200
1430099	5" Stainless Steel Guy Wire Bracket	130	180
1430100	6" Stainless Steel Guy Wire Bracket	150	200



Straight Lengths with Handles

Available in Black & Stainless Steel

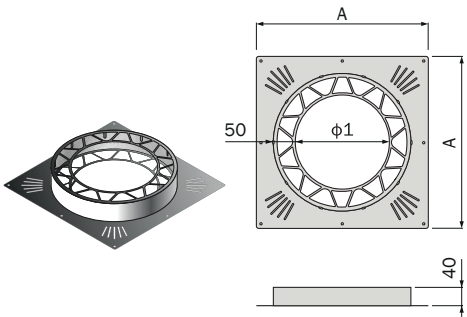
Code	Description	L	Measured in mm.	
			ϕi	ϕe
1430149	4" Black Straight Lengths with Handles	450	100	150
1430150	5" Black Straight Lengths with Handles	450	130	180
1430140	4" Black Straight Lengths with Handles	950	100	150
1430147	5" Black Straight Lengths with Handles	950	130	180



Ventilated Firestop with Intumescent Strip

Available in Black & Stainless Steel

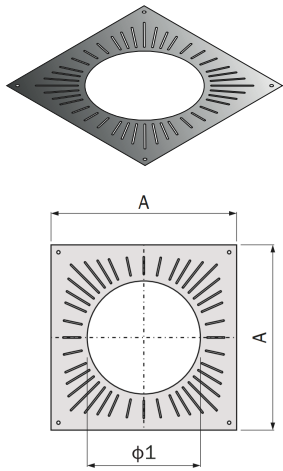
Code	Description	φ1	Measured in mm.		
			A	φi	φe
1430175	5" Black Firestop with Intumescent Strip	185	355	130	180
1430180	6" Black Firestop with Intumescent Strip	205	375	150	200
1430177	5" Stainless Steel Firestop with Intumescent Strip	185	355	130	180
1430182	6" Stainless Steel Firestop with Intumescent Strip	205	375	150	200



Ventilated Firestop

Available in Black & Steel

Code	Description	φ1	Measured in mm.		
			A	φi	φe
1430176	5" Black Firestop	185	380	130	180
1430181	6" Black Firestop	205	400	150	200
1430178	5" Steel Firestop	185	380	130	150
1430183	6" Steel Firestop	205	400	150	200
1430247	7" Steel Firestop	235	430	180	230
1430221	8" Steel Firestop	255	450	200	250
1430277	10" Steel Firestop	305	500	250	300



Black Aerosol Spray

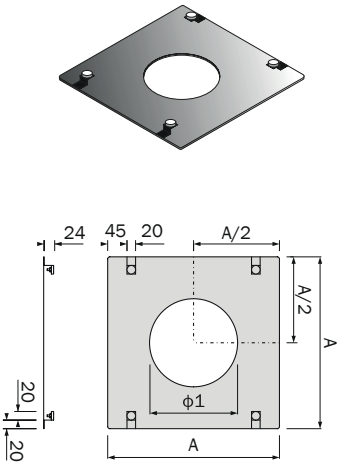
Code	Description
1430190	400ml Black Aerosol Spray



Magnetic Cover Plate

Available in Black

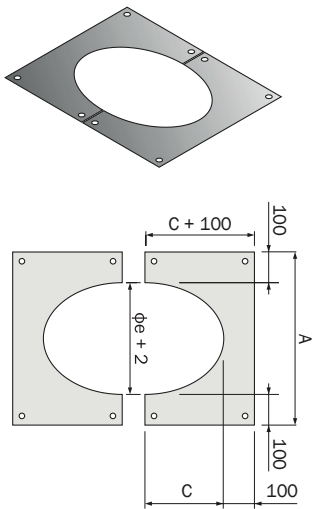
Code	Description	φ1	Measured in mm.		
			A	φi	φe
1430174	5" Black Firestop Cover Plate	185	380	130	180
1430179	6" Black Firestop Cover Plate	205	400	150	200



15-30° Rosette (Trim Plate)

Available in Black & Stainless Steel

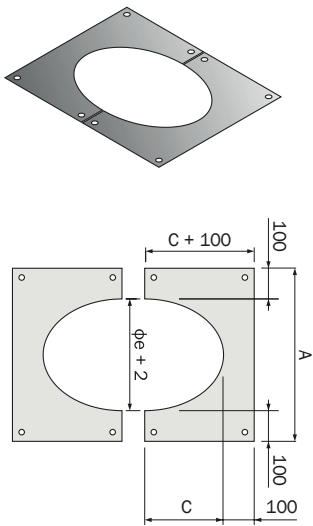
Code	Description	A	C	Measured in mm.	
				φi	φe
1430166	4" Black Rosette 15-30°	352	88	100	150
1430152	5" Black Rosette 15-30°	382	105	130	180
1430154	6" Black Rosette 15-30°	402	117	150	200
1430153	5" Stainless Steel Rosette 15-30°	382	105	130	180
1430155	6" Stainless Steel Rosette 15-30°	402	117	150	200



45° Rosette (Trim Plate)

Available in Black & Stainless Steel

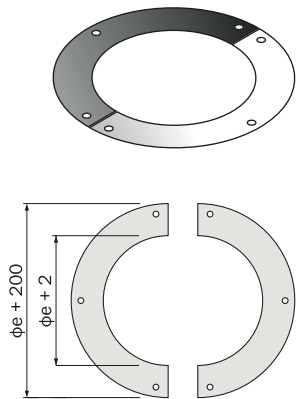
Code	Description	Measured in mm.			
		A	C	φi	φe
1430167	4" Black Rosette 45°	352	107	100	150
1430052	5" Black Rosette 45°	382	128	130	180
1430001	6" Black Rosette 45°	402	142	150	200
1430068	5" Stainless Steel Rosette 45°	382	128	130	180
1430069	6" Stainless Steel Rosette 45°	402	142	150	200
1430251	7" Stainless Steel Rosette 45°	432	164	180	230
1430252	8" Stainless Steel Rosette 45°	452	178	200	250



90° Rosette (Trim Plate)

Available in Black & Stainless Steel

Code	Description	Measured in mm.	
		φi	φe
1430133	4" Black Rosette 90°	100	150
1430053	5" Black Rosette 90°	130	180
1430002	6" Black Rosette 90°	150	200
1430070	5" Stainless Steel Rosette 90°	130	180
1430071	6" Stainless Steel Rosette 90°	150	200
1430249	7" Stainless Steel Rosette 90°	180	230
1430250	8" Stainless Steel Rosette 90°	200	250



Insulation Wrap: Fibreglass Clax

Manufacturing Characteristics

- Type “E” Fibreglass insulation, mechanically needed without binding resins, with external covering made of aluminium flexible reinforced film
- Thanks to its elasticity and flexibility characteristics, the product can be contained in small sized boxes
- Thickness 20 mm
- Length 950 mm, without longitudinal cut
- Density 120 kg/m³
- Available inner diameters from 100mm to 150 mm (see table)

Applications

Quick thermal insulation for flues serving heat generators fuelled by gas, liquid, or solid fuels

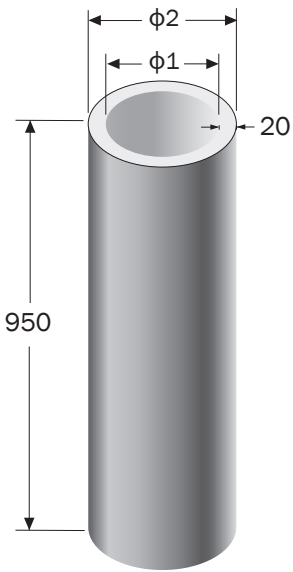
Operation Temperature

Up to 600°C

Fittings

High temperature aluminized adhesive tape (in 50m rolls) for jointing

Article	Wrap Inner Diameter (φ1) (mm)	Wrap Outer Diameter (φ2) (mm)	Flue Pipe Size (mm)	Thickness (mm)	Length (mm)	Density (kg/m³)
Clax 1152	160	200	100/150	20	950	120
Clax 1182	190	230	130/180	20	950	120
Clax 1202	210	250	150/200	20	950	120



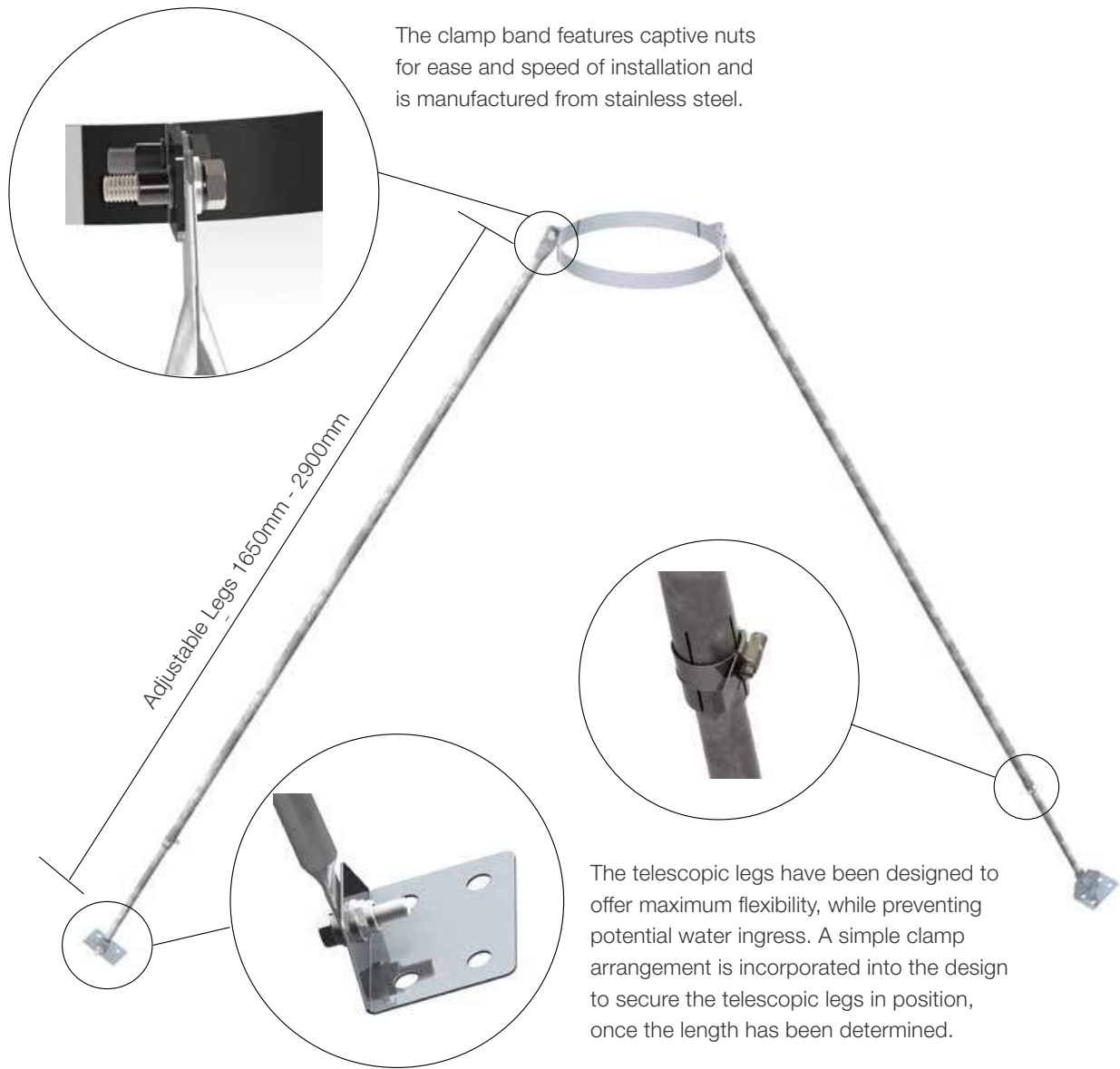
SFL Roof Brace Kit

Roccheggiani	130	150
--------------	-----	-----

Includes 2 Galvanised Mild Steel Telescopic Extension Poles, 2 Roof Brackets and a Support Ring.
Poles adjust from X to Y
Provides additional support above the roof line.

Universal Roof Support Bracing Kit

The Universal Roof Support Bracing Kit is designed to offer extra lateral support, where the chimney extends beyond the maximum free-standing height of the chimney product or where guy wire brackets are not suitable. It is not designed to take vertical loadings.

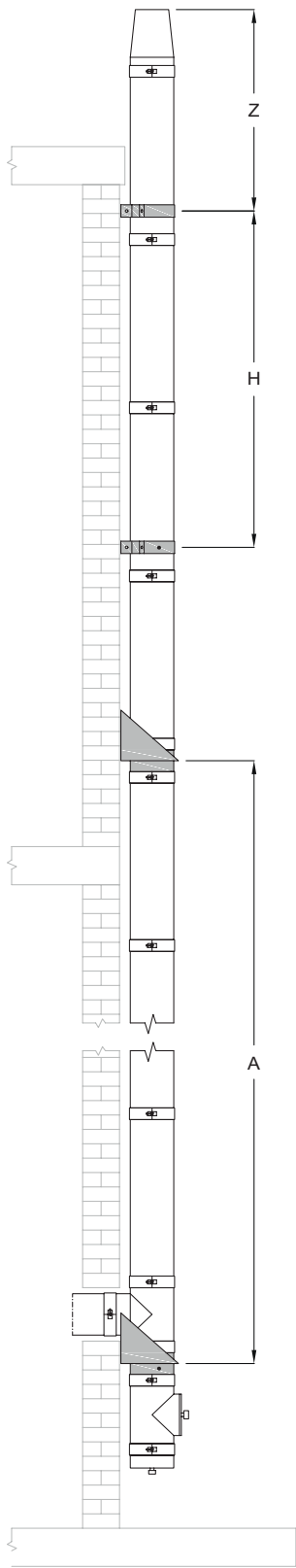
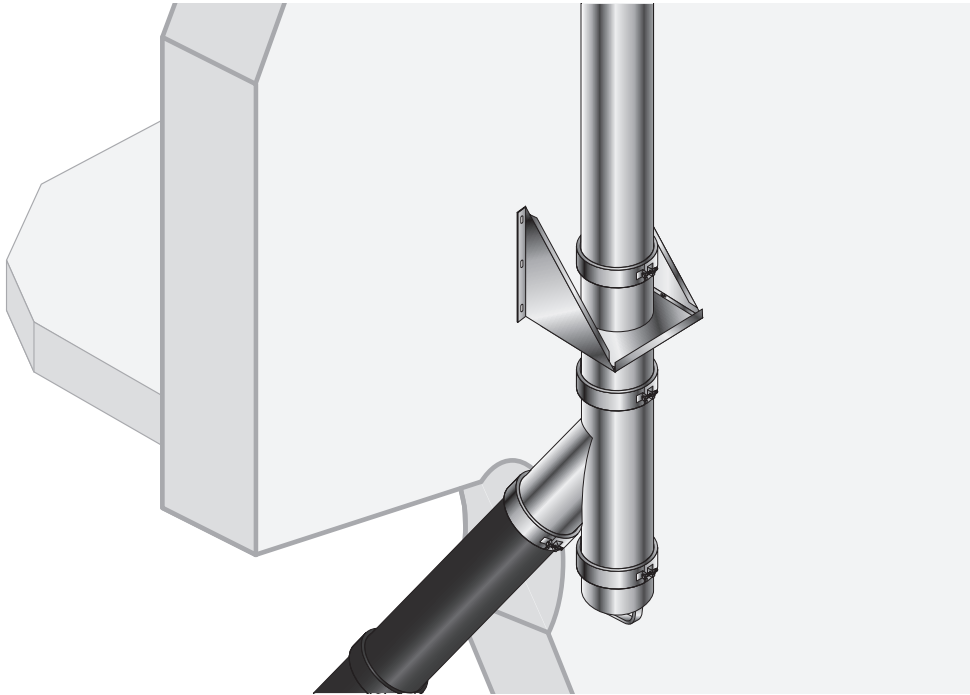


Standard Chimney Support

Measured in mm.

Diameter	A	H	Z	D
130/180	21	2	1.5	2.5
150/200	18	2	1.5	2.5
180/230	17	2	1.5	2.5
200/250	16	2	1.5	2.5
250/300	14	2	1.5	2.5

A: Supported Weight
H: Recommended Distance Between Brackets
Z: Unsupported Distance Above Last bracket
D: Distance Unsupported with Structural Locking Band



ROCCEGGIANI[®]
care for air

BROUGHT TO YOU BY

